

geoCentric™ stacker



A comfortable solution for short term use. The [geoCentric Guest/Stacker](#) series provides a comfortable solution for short term use and guest seating. The geoCentric stacker series can stack six high.

Specifications

Features:

- geoCentric stacker series can stack six high or ten when using the stacker cart
- Modular options include stacker and sled base with or without arms
- Stacker chairs are available with or without casters
- Overall dimensions: 23 ½" wide by 19" deep by 31" high

Backrest:

- Backrest 18 ¼" wide by 12 ½" high
- Concealed back brackets
- Dual curve backrest

Seat:

- 17" seat height
- Dual curve waterfall seat
- Seat pan 18 ½" wide by 19 ½" deep

Frame:

- 14 gauge, 7/8" steel tube frame
- Black textured semi-gloss powder coat paint

Arms:

- Glass filled nylon arms (black)

Base:

- Kick back legs for stability with durable custom glides

Fabrics (SEE PAGE 14 FOR MORE INFORMATION):

- Open House



geoCentric Stacker without arms in Black (Model 2)

NAME (PRODUCT CODE)	BASE STYLE	ARMREST	STACKING CAPABILITY	UPHOLSTERING	CEILING PRICE
Stacker (geo-stacker)	Four legs	Without arms	Stacking capability	Dual fabric	Contact us
Stacker with Arms (geo-Stacker-A)	Four legs	With arms	Stacking capability	Dual fabric	Contact us

iCentric™

stacker



The iCentric Stacker Series offer superior comfort for waiting areas or wherever guests require a comfortable seat. Backed by a 10 year warranty, the iCentric Stacker chairs are available with or without arms and are stackable. For easy storage the iCentric Stacker can stack six units high.

Specifications

Backrest:

- 19" wide x 15.5" high
- Dual curve backrest

Seat:

- 18.5" wide x 19.5" deep
- Dual curve waterfall seat

Frame & glides:

- 14 gauge, 7/8" steel tube
- Kick back legs for stability with custom glides

Fabrics (SEE PAGE 14 FOR MORE INFORMATION):

- Open House



iCentric Stacker with Arms (Model 2)

NAME (PRODUCT CODE)	BASE STYLE	ARMREST	STACKING CAPABILITY	UPHOLSTERING	CEILING PRICE
Stacker (I-Stacker)	Four legs	Without arms	Stacking capability	Dual fabric	Contact us
Stacker with Arms (I-Stacker-A)	Four legs	With arms	Stacking capability	Dual fabric	Contact us

ecoCentric™

pivot-back guest



Highly durable and cleanable, Pivot Back Guest chairs provide an affordable solution for healthcare settings and waiting areas. The Pivot Back Guest chair offers a durable steel frame structure, a plastic back cap and a plastic shroud cover under the seat.

The Pivot Back Guest chair is specifically designed to provide a high level of comfort. The back structure allows a pivot motion to provide additional ergonomic comfort. Light weight and versatile, the Pivot Back Guest chair is ideal for high traffic, high volume areas.

Specifications

Backrest:

- Dual curve upholstered backrest with plastic back cap
- Pivot motion for additional comfort

Seat:

- Dual curve waterfall upholstered seat
- Under-seat plastic shroud cover

Frame

- Durable 14 gauge, 7/8" steel tube frame (black) with metal-to-metal connections for improved cleanability
- Kick back legs for stability with durable custom glides
- Black textured semi-gloss powder coat paint
- Sloped nylon arms (black)

Fabrics (SEE PAGE 14 FOR MORE INFORMATION):

- Open House



ecoCentric Pivot Back Stacker with arms in Thistle (Model 2)

NAME (PRODUCT CODE)	BASE STYLE	ARMREST	STACKING CAPABILITY	CEILING PRICE
Stacker (eco-PB-Guest)	Four legs	Without arms	Stacking capability	Contact us
Stacker with arms (eco-PB-Guest-A)	Four legs	With arms	Stacking capability	Contact us

Armrest features

1 3" ADJUSTABLE T-ARMS

3" Adjustable T-Arms have 4" of arm height adjustment and 2" of width adjustment for multiple user requirements. Finger tip adjustment.
 Arm height from seat pan 6" to 9".
 Oval tube polyurethane arm pad 4 ½" wide by 10 ⅝" long.

2 3" ADJUSTABLE SWIVEL ARMS

Same features as the 3" Adjustable T-Arms above with the flexibility of swivel arm pads.
 Patented swivel arms rotate to accommodate multiple work angles and provide full forearm support.
 Oval tube polyurethane arm pad 4 ½" wide by 10 ⅝" long.

3 4" ADJUSTABLE TRIGGER LATERAL SWIVEL ARMS

Lateral Swivel Arms have 2" of width adjustment and 4" of arm height adjustment for multiple user requirements. Armpads have up to 3" of inward telescopic adjustment.
 Arm height from seat pan 6.5" – 10.5".
 Patented swivel arms rotate to accommodate multiple work angles and provide full forearm support

4 4" ADJUSTABLE SWIVEL ARMS

Adjustable Swivel Arms have 4" of arm height adjustment and 2" of width adjustment for multiple user requirements. Arm height from seat pan 6 ⅝" - 10 ⅝".
 Patented swivel arms rotate to accommodate multiple work angles and provide full forearm support.

5 4" ADJUSTABLE T-ARMS

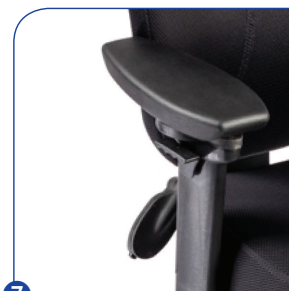
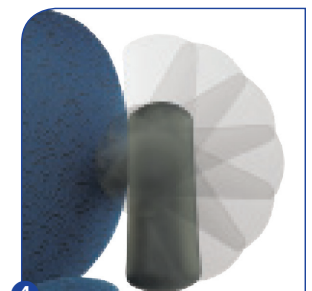
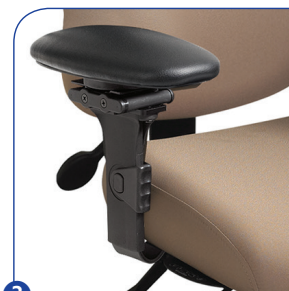
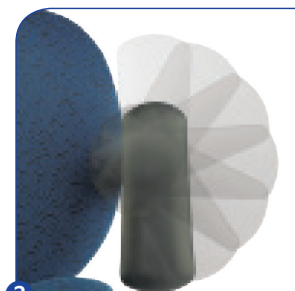
Adjustable T-arms have 2" of width adjustment and 4" of arm height adjustment for multiple user requirements. Arm height from seat pan 6" - 10"
 Oval upholstered arm cap, in Black Destiny, an engineered nytek leather match.
 Arm cap is 5" wide by 10" long.

6 ICENTRIC MESH ARMS

For fast and easy reference, our database tracks all chair specifications and customer information by serial number. This system makes reordering chairs easy and allows us to make repairs or modifications in one visit.

7 OVAL TUBE SWIVEL T-ARMS

3" Adjustable Swivel
 Arms have 3 ¾" of arm height adjustment and 2" of width adjustment for multiple user requirements. Finger tip adjustment.
 Arm height from seat pan 6 ¼" - 10"
 Oval tube polyurethane arm pad 4 ½" wide by - 10 ⅝" long.
 Patented swivel arms rotate to accommodate multiple work angles and provide full forearm support for all keyboard and mouse tasks.



Upholstery selection

ergoCentric offers a variety of fabrics that are highly durable and meet heavy duty abrasion rub tests. Our upholsteries meet or exceed the fabric requirements. We have included a sample of colours available for the complete selection and fabric specifications visit ergocentric.com/SA/fabric or scan the QR code below.

Open House

A Terratex® fabric from True Textiles and offered by ergoCentric Seating Systems, Open House seating upholstery is made from 100% recycled or compostable material using increasingly sustainable manufacturing practices to produce a high quality product that is recyclable at the end of its useful life. With an abrasion rating of 250,000 double rubs, Open House exceeds the heavy duty rating for abrasion resistance.



Asteroid



Onyx



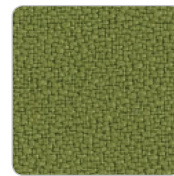
Red Delicious



Midnight



Straw



Green Apple



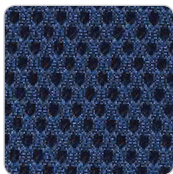
Thistle

Air Knit

The Air Knit fabric is a durable, three-dimensional fabric that provides optimal breathability while its cushioned softness offers long lasting comfort. One hundred percent polyester mesh Air Knit is available in four different colours.



Brown



Navy



Black



Charcoal

This is a sample of the fabric colour selection. For the current and complete colour options visit our website at ergocentric.com/SA/fabric or scan the QR code.



Federal government supply agreement warranty

Office 10 year warranty

ergoCentric Seating Systems hereby warrants all of its Office Seating products against defects and functional failure of materials for 10 years from the date of purchase as long as the chair is in use by the original purchaser, including: the pneumatic lift, mechanisms, arms, foam, fabric and mesh (breathable material).

The tCentric Hybrid™ Mesh Upholstery and the iCentric backrest structure and mesh upholstery are also warranted for ten years from the date of purchase. For all COM fabrics, warranty coverage shall be as specified by the fabric manufacturer. These warranties shall not apply to any products which must be replaced because of normal wear and tear, negligence, abuse or accident, shipping damage, or product use other than in accordance with written instructions and warnings. ergoCentric makes no warranty that any of its products are suitable for any particular purpose and makes no other warranties, expressed or implied, other than those set forth herein. In no event shall ergoCentric be liable in either tort or contract for any loss or direct, special, incidental, consequential or exemplary damages. This warranty is based on an eight hour work day only for users weighing up to 280 lbs (127 kg).

Warranty claims

ergoCentric will repair or replace any product or materials, covered by this warranty, found to be defective or inferior within the warranted period. This warranty includes the cost of labor and shipping. Claims are to be made directly to ergoCentric or to the authorized dealer from whom the chairs were purchased. Product or materials for which a claim has been made, must be made available for inspection by an authorized ergoCentric representative.

Limit of warranty

These manufacturer's warranties shall be valid only during the term of these warranties; and while the products herein warranted are in the possession of the original purchaser. The original purchaser shall mean the party which first purchased the products for its own use whether from ergoCentric or an authorized ergoCentric dealer.

10 YEARS*

- Original Purchaser
- Defects and functional failure of materials up to a weight of 280 lbs.
- Including:
 - > Frame, mechanisms, pneumatic lift, arms, foam, Open House and mesh (breathable material) fabric**
 - > Bariatric Guest Chair up to a weight of 450 lbs.
 - > iCentric Mesh backrest structure
 - > tCentric Hybrid™ Mesh Upholstery

*Includes labor costs

** For all COM fabrics, warranty coverage shall be as specified by the fabric manufacturer