

Rotary Office Chair
E60PQ-120001/046/PQ

Leap®

Rotary Office Chair E60PQ-120001/046/PQ



With an exceptional range of adjustments, Leap delivers full support for various body shapes and sizes.

Movement is healthy and Leap supports your body in reducing pressure on the spine, sending oxygen to your muscles, and increasing blood flow to your brain. Changes in posture help you stay comfortable and more attentive.

Your body is unique. You need a chair that easily adjusts to fit you, your preferences, and how you work. Leap's Natural Glide System™ enables you to comfortably recline without straining your eyes, neck, or arms.

And a chair that is good for people should also be good for the environment. Every material, every stage of a Leap chair's life, is designed to respect and nurture human and environmental health.

For more information regarding Leap, [Click Here](#).
To request a quote for Leap, [Click here](#).



Model – Leap V2

FEATURES/ATTRIBUTES

Backrest Height	High Back
Lumbar Support	Adjustable
Armrests	Height/Width/Swivel Adjustable "T" Arm
Seat Depth	Adjustable
Seat and Backrest Locks	Lockable or Stoppable in Multiple Positions
Tilt Mechanism	Concurrently
Upholstering	Dual Fabric
Green Chair Recognition	Yes



Model – 46216179

FEATURES/ATTRIBUTES

Backrest Height	High Back
Lumbar Support	Adjustable
Armrests	Height/Width/Swivel Adjustable "T" Arm
Seat Depth	Adjustable
Seat and Backrest Locks	Lockable or Stoppable in Multiple Positions
Tilt Mechanism	Concurrently
Upholstering	Dual Fabric
Green Chair Recognition	Yes



Model – 46216179 (Headrest)

FEATURES/ATTRIBUTES

Backrest Height	High Back
Lumbar Support	Adjustable
Armrests	Height/Width/Swivel Adjustable "T" Arm
Seat Depth	Adjustable
Seat and Backrest Locks	Lockable or Stoppable in Multiple Positions
Tilt Mechanism	Concurrently
Upholstering	Dual Fabric
Green Chair Recognition	Yes

Think™

Rotary Office Chair E60PQ-120001/046/PQ



The Think chair easily supports all types of work, from collaborative group work to focused work. Think easily integrates into today's workplace, providing comfort and support no matter the task or type of work.

Think is smart enough to support both impromptu collaborative work, or an all day sit needed for focused work. It intuitively adjusts as a user moves, allowing them to get to work faster.

Think easily creates maximum customized comfort with a minimal number of adjustments. The integrated LiveBack system, combines a flexible back frame, linked flexors and dual-energy lumbar to intuitively sense and respond to user's needs.

Think features a refined aesthetic, combining beauty and functionality. A variety of surface materials and a range of product options, make it easy to integrate Think into any application.

For more information regarding Think, [Click Here](#).
To request a quote for Think, [Click here](#).

Model – 465A300

FEATURES/ATTRIBUTES

Backrest Height	High Back
Lumbar Support	Adjustable
Armrests	Height/Width/Swivel/Adjustable "T" Arm
Seat Depth	Adjustable
Seat and Backrest Locks	Lockable or Stoppable in Multiple Positions
Tilt Mechanism	Concurrently
Upholstering	Back Breathable Material/Seat Fabric
Green Chair Recognition	Yes



Model – 465A000

FEATURES/ATTRIBUTES

Backrest Height	High Back
Lumbar Support	Adjustable
Armrests	Height/Width/Swivel/Adjustable "T" Arm
Seat Depth	Adjustable
Seat and Backrest Locks	Lockable or Stoppable in Multiple Positions
Tilt Mechanism	Concurrently
Upholstering	Dual Fabric
Green Chair Recognition	Yes



Amia®

Rotary Office Chair E60PQ-120001/046/PQ



Amia is a hardworking, versatile seating solution designed to handle long hours of serious sitting. With fully upholstered back and arms, Amia brings an element of sophistication to any workspace.

Tucked away inside its backrest is Amia's patent-pending LiveLumbar – a system of flexors that contour to fit your spine, for continuous lower back support as you move in your chair. You may not see it, but you'll certainly feel it. As you sit in the chair, an adjustable LiveLumbar zone flexes with your every move, for consistent ergonomic support for your lower back. Hour after hour, day after day.

With additional comfort features like 4-way adjustable arms, adjustable seat depth and a flexible front seat edge, Amia keeps you feeling good. It's a chair for every day, that's not your everyday chair.

For more information regarding Amia, [Click Here](#).

To request a quote for Amia, [Click here](#).



Model – 4821410

FEATURES/ATTRIBUTES

Backrest Height	High Back
Lumbar Support	Adjustable
Armrests	Height/Width/Swivel Adjustable "T" Arm
Seat Depth	Adjustable
Seat and Backrest Locks	Lockable in Setup Position
Tilt Mechanism	Concurrently
Upholstering	Dual Fabric
Green Chair Recognition	Yes

Gesture®

Rotary Office Chair E60PQ-120001/046/PQ



Technology is the single greatest force driving the changes in the way we work, live and behave. The new, multiple devices we deploy throughout our work day allow us to flow between tasks, fluidly and frequently.

Whether large or small, Gesture promises personalized and custom comfort for all users in one simple solution. We didn't start with a chair design; we started by looking at the unique movements and features of the body. Like the human body, Gesture is designed as a system of synchronized interfaces, designed and engineered to be intuitive to adjust.

Gesture is the first chair designed to support our interactions with today's technologies. Inspired by the human body. Created for the way we work today.

For more information regarding Gesture, [Click Here.](#)

To request a quote for Gesture, [Click here.](#)



Model – 442A30 (Shell Back)

FEATURES/ATTRIBUTES

Backrest Height	High Back
Lumbar Support	Adjustable
Armrests	Height/Width/Swivel/Adjustable "T" Arm
Seat Depth	Adjustable
Seat and Backrest Locks	Lockable or Stoppable in Multiple Positions
Tilt Mechanism	Concurrently
Upholstering	Dual Fabric
Green Chair Recognition	Yes



Model – 442A40 (Wrapped Back)

FEATURES/ATTRIBUTES

Backrest Height	High Back
Lumbar Support	Adjustable
Armrests	Height/Width/Swivel/Adjustable "T" Arm
Seat Depth	Adjustable
Seat and Backrest Locks	Lockable or Stoppable in Multiple Positions
Tilt Mechanism	Concurrently
Upholstering	Dual Fabric
Green Chair Recognition	Yes

Reply®

Rotary Office Chair E60PQ-120001/046/PQ



Work happens in many places. Choices for seating are abundant with Reply – a complete global family of chairs that are as nice to look at as they are to sit in.

Comfort is no secret for Reply chairs with mesh backs. Our exclusive mesh is woven with chenille yarn offering soft, supportive comfort in an airy and light scale design.

Reply is ready to take on whatever your workday brings. Simple, easy-to-use controls provide the individual comfort adjustments you need to make sitting a pleasure.

For more information regarding Reply, [Click Here](#).

To request a quote for Reply, [Click here](#).



Model – 466160MTVA

FEATURES/ATTRIBUTES

Backrest Height	High Back
Lumbar Support	Adjustable
Armrests	Height/Width/Swivel/Adjustable “T” Arm
Seat Depth	Medium Fixed*
Seat and Backrest Locks	Lockable or Stoppable in Multiple Positions
Tilt Mechanism	Concurrently
Upholstering	Back Breathable Material/Seat Fabric
Green Chair Recognition	Yes

* Seat depth adjustment allows the seat to slide forward or back to accommodate different leg lengths.

Crew™

Rotary Office Chair

E60PQ-120001/046/PQ



Crew office chairs deliver all-day comfort and a high level of performance with simple, intuitive controls, right at your finger tips. Classic and refined design, Crew was designed by Brian Kane.

For more information regarding Crew, [Click Here](#).

To request a quote for Crew, [Click here](#).



Model – TS30832

FEATURES/ATTRIBUTES

Backrest Height	High Back
Lumbar Support	Adjustable
Armrests	Height/Width/Swivel/Adjustable “T” Arm
Seat Depth	Adjustable
Seat and Backrest Locks	Lockable or Stoppable in Multiple Positions
Tilt Mechanism	Concurrently
Upholstering	Dual Fabric
Green Chair Recognition	Yes

à la carte®

Rotary Office Chair E60PQ-120001/046/PQ



Function, style and comfort are the name of the game with this chair. À la carte has a clean design that completes the look of any office.

À la carte is a functional, value-priced office chair that provides style and comfort. With a refined design, this chair features round and square tapered backs. Start with a simple task chair and add the features you want.

For more information regarding à la carte, [Click Here](#).

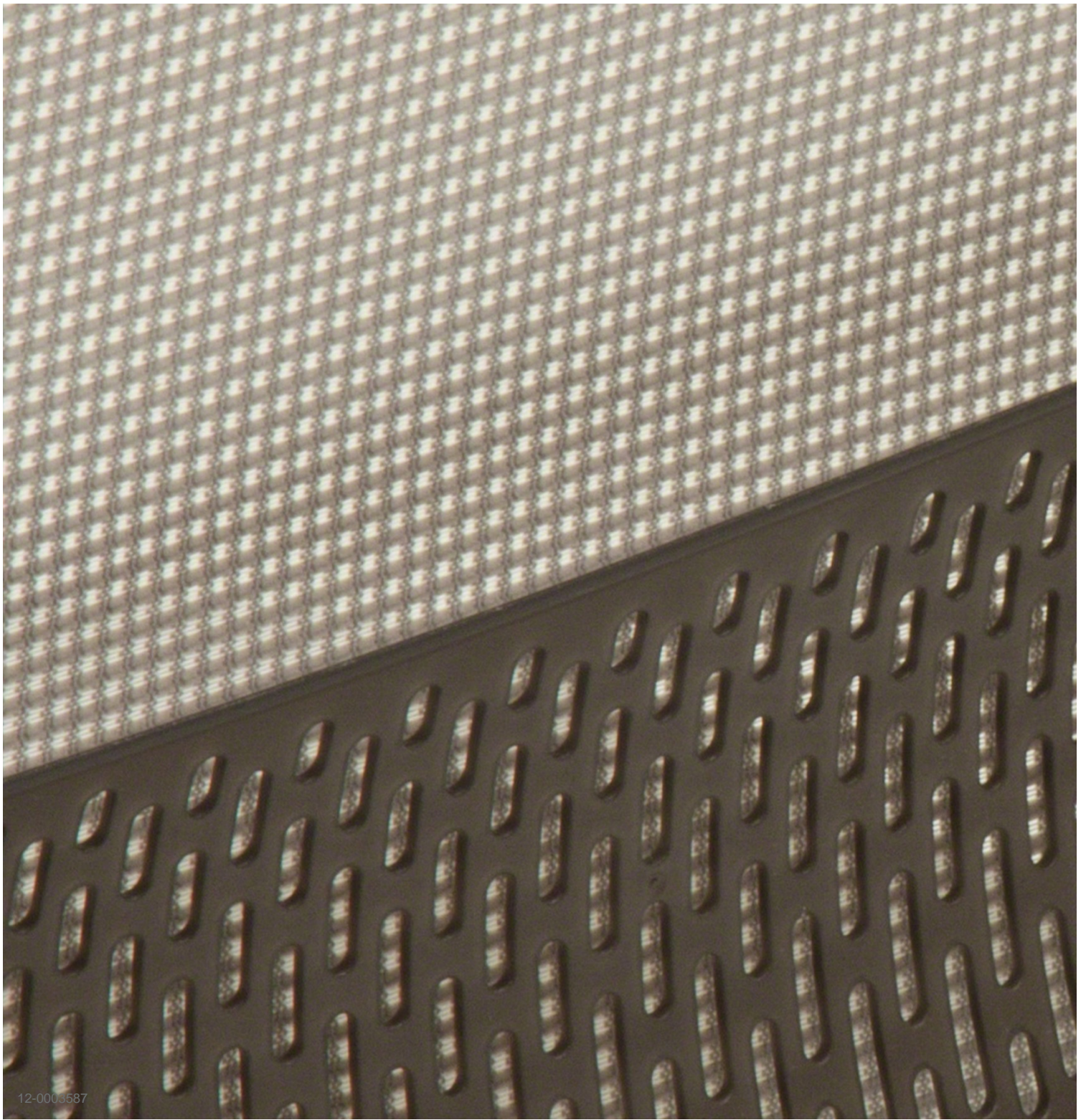
To request a quote for à la carte, [Click here](#).



Model – TS30105

FEATURES/ATTRIBUTES

Backrest Height	Standard Back
Lumbar Support	Adjustable
Armrests	Height/Width Adjustable “T” Arm
Seat Depth	Adjustable
Seat and Backrest Locks	Lockable or Stoppable in Multiple Positions
Tilt Mechanism	Concurrently
Upholstering	Dual Fabric
Green Chair Recognition	Yes



12-0003587

Rotary Conference Chairs
E60PQ-120001/046/PQ

Amia®

Rotary Conference Chair

E60PQ-120001/046/PQ



Amia is a hardworking, versatile seating solution designed to handle long hours of serious sitting. With fully upholstered back and arms, Amia brings an element of sophistication to any workspace.

Tucked away inside its backrest is Amia's patent-pending LiveLumbar—a system of flexors that contour to fit your spine, for continuous lower back support as you move in your chair. You may not see it, but you'll certainly feel it. As you sit in the chair, an adjustable LiveLumbar zone flexes with your every move, for consistent ergonomic support for your lower back. Hour after hour, day after day.

With additional comfort features like 4-way adjustable arms, adjustable seat depth and a flexible front seat edge, Amia keeps you feeling good. It's a chair for every day, that's not your everyday chair.

For more information regarding Amia, [Click here](#).

To request a quote for Amia, [Click here](#).



Model – 4821410

FEATURES/ATTRIBUTES

Backrest Height	High Back
Lumbar Support	Adjustable
Armrests	Height/Width/Swivel Adjustable "T" Arm
Seat Depth	Adjustable
Seat and Backrest Locks	Lockable in Setup Position
Tilt Mechanism	Concurrently
Upholstering	Dual Fabric
Green Chair Recognition	Yes

Think™

Rotary Conference Chair

E60PQ-120001/046/PQ



The Think chair easily supports all types of work, from collaborative group work to focused work. Think easily integrates into today's workplace, providing comfort and support no matter the task or type of work.

Think is smart enough to support both impromptu collaborative work, or an all day sit needed for focused work. It intuitively adjusts as a user moves, allowing them to get to work faster.

Think easily creates maximum customized comfort with a minimal number of adjustments. The integrated LiveBack system, combines a flexible back frame, linked flexors and dual-energy lumbar to intuitively sense and respond to user's needs.

Think features a refined aesthetic, combining beauty and functionality. A variety of surface materials and a range of product options, make it easy to integrate Think into any application.

For more information regarding Think, [Click here.](#)

To request a quote for Think, [Click here.](#)



Model – 465A000

FEATURES/ATTRIBUTES

Backrest Height	High Back
Lumbar Support	Adjustable
Armrests	Fixed Arm
Seat Depth	Adjustable
Seat and Backrest Locks	Lockable or Stoppable in Multiple Positions
Tilt Mechanism	Concurrently
Upholstering	Dual Fabric
Green Chair Recognition	Yes

Cobi

Rotary Conference Chair

E60PQ-120001/046/PQ



Every part of Cobi was designed to flex and adjust to your body. The chair's top flexing edge lets you comfortably rest your arm on top of the chair. The flexing seat encourages you to move and shift, allowing you to sit centered or off to the sides. And the flexing back contours to support any posture your body needs at any given moment.

The Cobi chairs offers one manual adjustment (seat height). The rest is taken care of for you. The weight-activated mechanism naturally puts you in the best position of comfort right from the start. When you first sit in Cobi, it senses your center of gravity and adjusts to the position that will put the least amount of stress on your body, while still keeping you properly oriented and supported. When you shift or move, Cobi does the same; allowing you to daydream in comfort.

For more information regarding Cobi, [Click here](#).

To request a quote for Cobi, [Click here](#).



Model – 434111

FEATURES/ATTRIBUTES

Backrest Height	High Back
Lumbar Support	Fixed
Armrests	Fixed Arm
Seat Depth	Medium Fixed
Seat and Backrest Locks	Lockable in Setup Position
Tilt Mechanism	Concurrently
Upholstering	Dual Fabric
Green Chair Recognition	Yes

Crew™

Rotary Conference Chair

E60PQ-120001/046/PQ



Crew office chairs deliver all-day comfort and a high level of performance with simple, intuitive controls, right at your finger tips. Classic and refined design, Crew was designed by Brian Kane.

For more information regarding Crew, [Click here](#).

To request a quote for Crew, [Click here](#).



Model – TS30832

FEATURES/ATTRIBUTES

Backrest Height	High Back
Lumbar Support	Adjustable
Armrests	Height/Width/Swivel Adjustable “T” Arm
Seat Depth	Adjustable
Seat and Backrest Locks	Lockable or Stoppable in Multiple Positions
Tilt Mechanism	Concurrently
Upholstering	Dual Fabric
Green Chair Recognition	Yes

à la carte®

Rotary Conference Chair

E60PQ-120001/046/PQ



Function, style and comfort are the name of the game with this chair. À la carte has a clean design that completes the look of any office.

À la carte is a functional, value-priced office chair that provides style and comfort. With a refined design, this chair features round and square tapered backs. Start with a simple task chair and add the features you want.

For more information regarding à la carte, [Click here.](#)

To request a quote for à la carte, [Click here.](#)



Model – TS30105

FEATURES/ATTRIBUTES

Backrest Height	Standard Back
Lumbar Support	Adjustable
Armrests	Height/Width Adjustable “T” Arm
Seat Depth	Adjustable
Seat and Backrest Locks	Lockable or Stoppable in Multiple Positions
Tilt Mechanism	Concurrently
Upholstering	Dual Fabric
Green Chair Recognition	Yes



Side Chairs
E60PQ-120001/046/PQ

Move™

Side Chair E60PQ-120001/046/PQ



Move stackable side seating is a durable solution available with a variety of options. As you sit, you move. And that's what makes Move such a pleasure to sit in. Designed to move, mold, and conform to practically every body, this lightweight stacker can go anywhere. Move is tough enough to support up to 300 lbs. and is wonderfully durable.

For more information regarding Move, [Click here](#).

To request a quote for Move, [Click here](#).



Model – 490410U

FEATURES/ATTRIBUTES

Base Style	Four Legs
Armrests	Without Arms
Stacking Capability	Stacking
Upholstering	Dual Fabric
Green Chair Recognition	Yes



Model – 490412U

FEATURES/ATTRIBUTES

Base Style	Four Legs
Armrests	With Arms
Stacking Capability	Stacking
Upholstering	Dual Fabric
Green Chair Recognition	Yes

Reply®

Side Chair

E60PQ-120001/046/PQ



Work happens in many places. Choices for seating are abundant with Reply—a complete family of comfortable value-friendly chairs that are as nice to look at as they are to sit in.

For more information regarding Reply, [Click here](#).

To request a quote for Reply, [Click here](#).



Model – 466452MT

FEATURES/ATTRIBUTES

Base Style	Four Legs
Armrests	With Arms
Stacking Capability	Stacking
Upholstering	Back Breathable Material/Seat Fabric
Green Chair Recognition	Yes

Player

Side Chair

E60PQ-120001/046/PQ



The simple and durable Player chair is a convenient, comfortable, stackable chair for a multitude of users. Its slim, quiet aesthetic fits in just about anywhere and is the perfect solution for high traffic areas like waiting rooms, classrooms, cafes or multi-purpose spaces.

For more information regarding Player, [Click here](#).

To request a quote for Player, [Click here](#).



Model – 475480M

FEATURES/ATTRIBUTES

Base Style	Sled
Armrests	Without Arms
Stacking Capability	Non-Stacking
Upholstering	Dual Fabric
Green Chair Recognition	Yes



Model – 475412M

FEATURES/ATTRIBUTES

Base Style	Four Legs
Armrests	With Arms
Stacking Capability	Stacking
Upholstering	Dual Fabric
Green Chair Recognition	Yes

Crew™

Side Chair

E60PQ-120001/046/PQ



Crew guest chair delivers aesthetic and functional choices that support many environments. Classic refined design by Brian Kane.

For more information regarding Crew, [Click here](#).

To request a quote for Crew, [Click here](#).



Model – TS30807

FEATURES/ATTRIBUTES

Base Style	Four Legs
------------	-----------

Armrests	With Arms
----------	-----------

Stacking Capability	Stacking
---------------------	----------

Upholstering	Dual Fabric
--------------	-------------

Green Chair Recognition	Yes
-------------------------	-----



Rotary Seating Fabric Options

E60PQ-120001/046/PQ



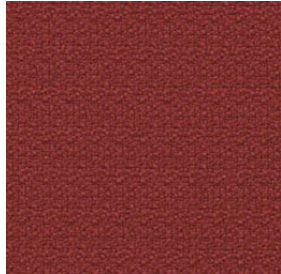


Price Group 1

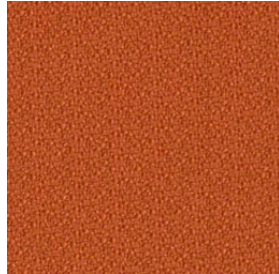
Available for all Rotary Office Chairs, Rotary Conference Chairs, and Side Chairs.
Please note* Leap V2 is only available in Buzz2.



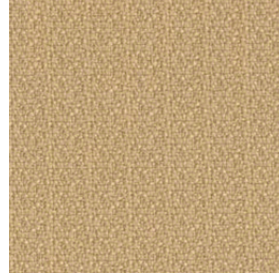
5F03 Tomato



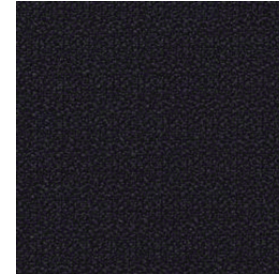
5G55 Pumpkin



5G52 Barley



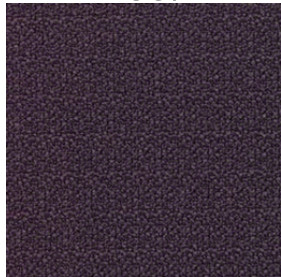
5F17 Black



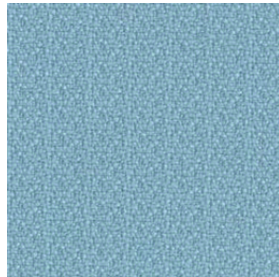
5G65 Tornado



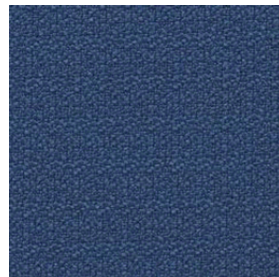
5F11 Eggplant



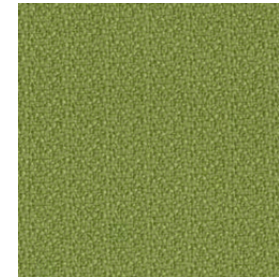
5G62 Atlantic



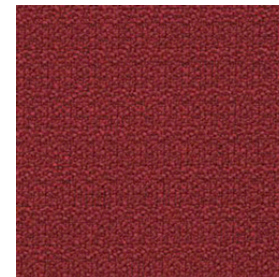
5F07 Blue



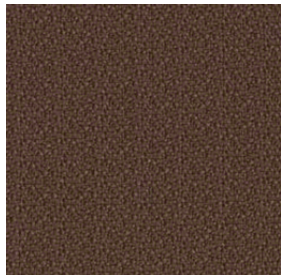
5G59 Meadow



5F04 Red



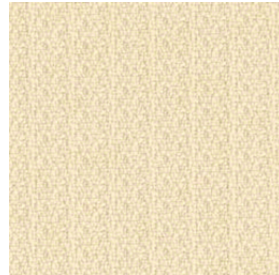
5G56 Timber



5G53 Sunrise



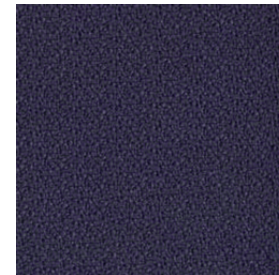
5G50 Dunegrass



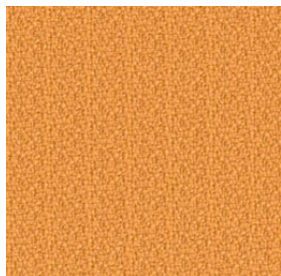
5F15 Stone



5G63 Crocus



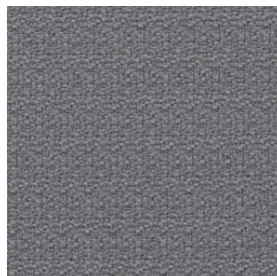
5G54 Carrot



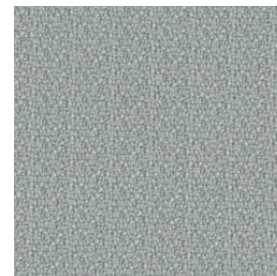
5G51 Sable



5F16 Grey



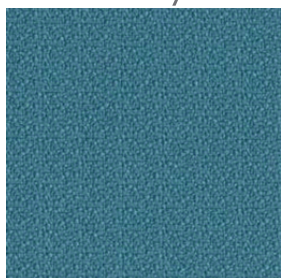
5G64 Alpine



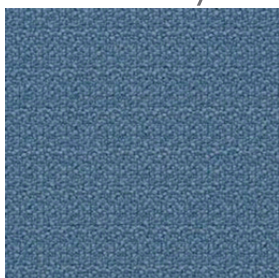
5F10 Grape



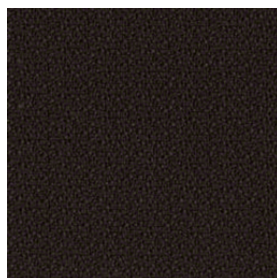
5G61 Cyan



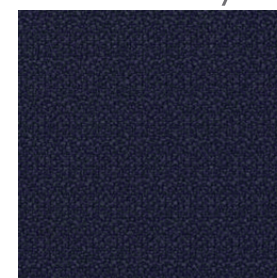
5F06 Sky



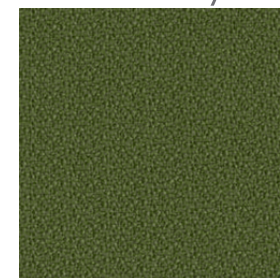
5G58 Chocolate



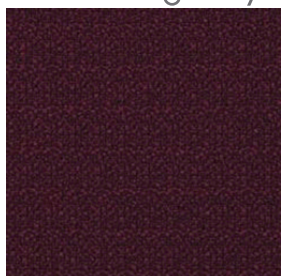
5F08 Navy



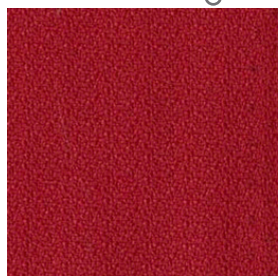
5G60 Ivy



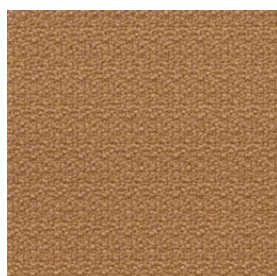
5F05 Burgundy



5G57 Rouge



5F01 Camel



To view these fabrics online, click on the desired swatch above.



Playground

5F32 Blade



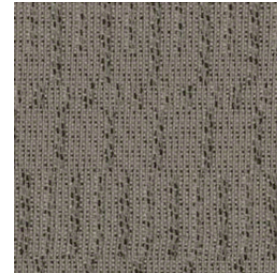
5F29 Chile



5F36 Huckleberry



5F33 Stone



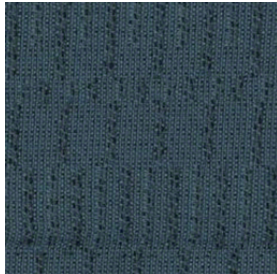
5F30 Amber



5F37 Charcoal



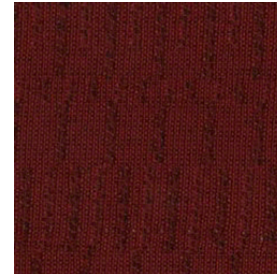
5F34 Sky



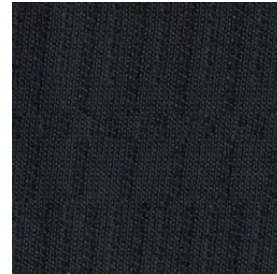
5F31 Nut



5F28 Claret



5F35 Navy



To view these fabrics online, click on the desired swatch above.





Price Group 2

Only available for Rotary
Conference Chair: Cobi 434111.

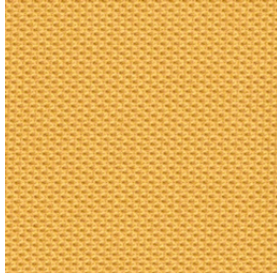
atlantic
business
interiors



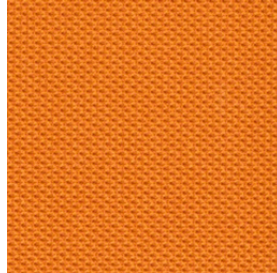
5S15 Coconut



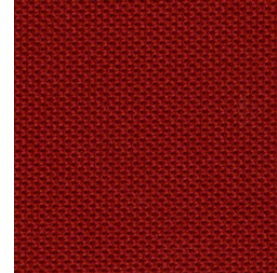
5S16 Turmeric



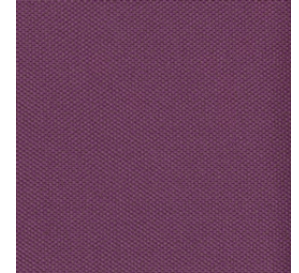
5S17 Tangerine



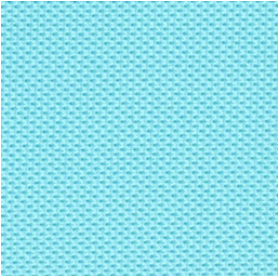
5S18 Scarlet



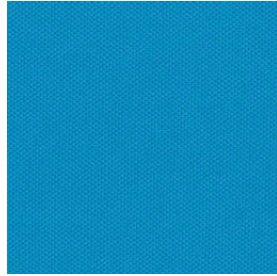
5S19 Concord



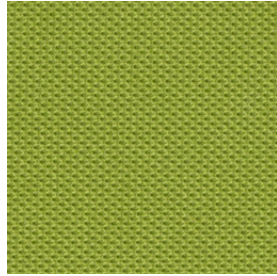
5S20 Maya Blue



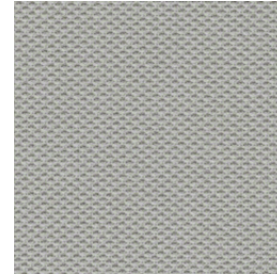
5S21 Blue Jay



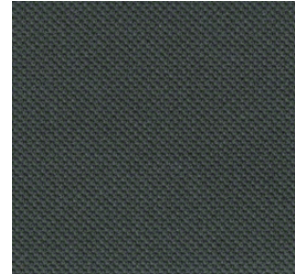
5S23 Wasabi



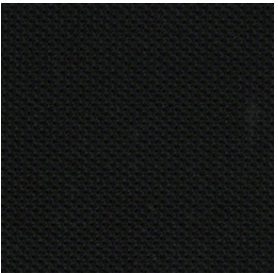
5S24 Nickel



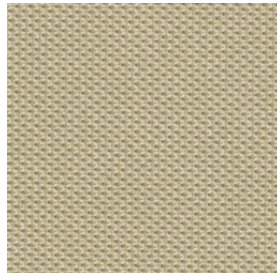
5S25 Graphite



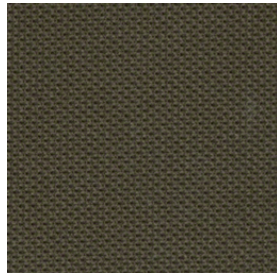
5S26 Licorice



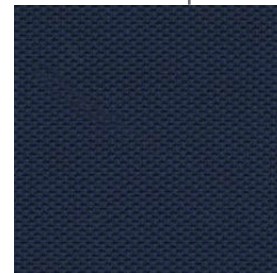
5S27 Malt



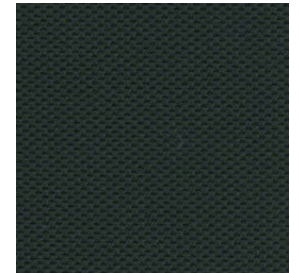
5S28 Root Beer



5S93 Blueprint

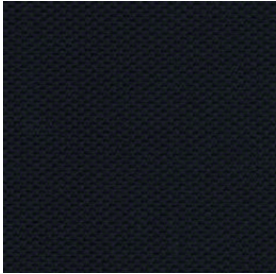


5S94 Lizard

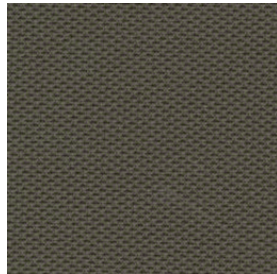


Cogent:Connect

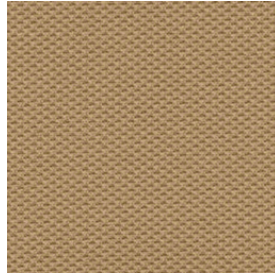
5S95 Sailor



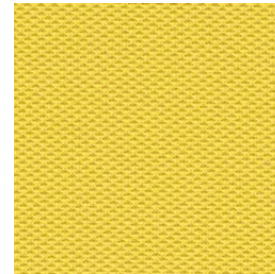
5S96 Quicksilver



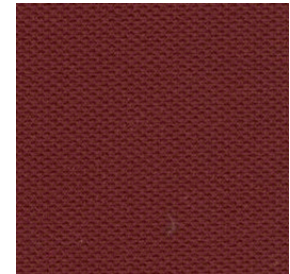
5S97 Nugget



5S98 Canary



5S99 Lipstick



5SD0 Royal Blue



To view these fabrics online, click on the desired swatch above.





Price Group 2

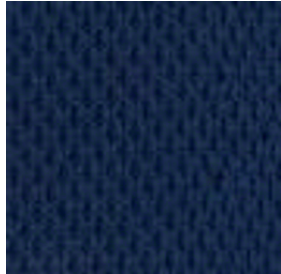
Only available for Rotary
Conference Chair: Cobi 434111.

atlantic
business
interiors

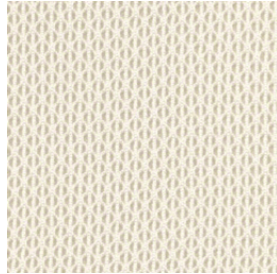


Connect 3D

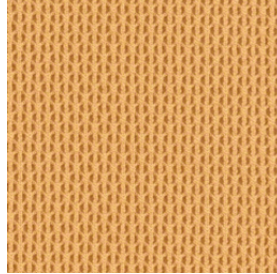
5014 Royal Blue



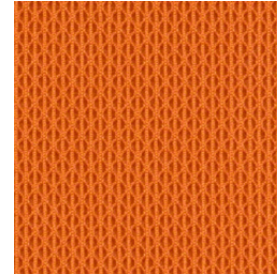
5015 Coconut



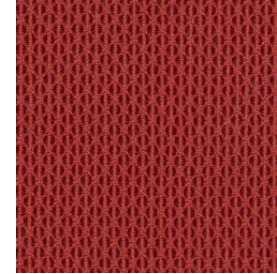
5016 Turmeric



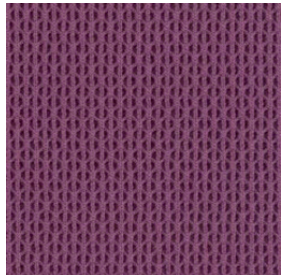
5017 Tangerine



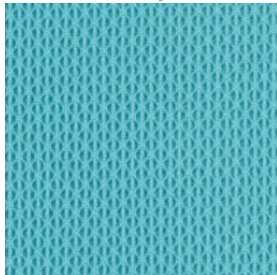
5018 Scarlet



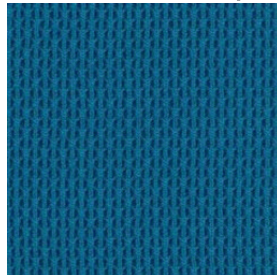
5019 Concord



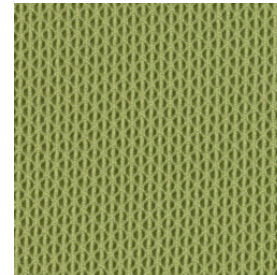
5020 Maya Blue



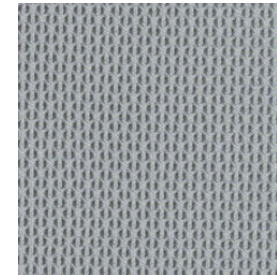
5021 Blue Jay



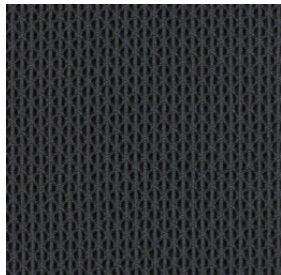
5023 Wasabi



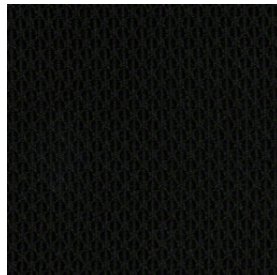
5024 Nickel



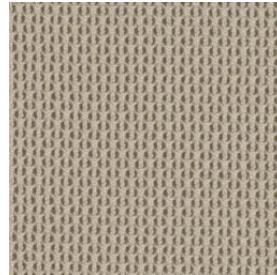
5025 Graphite



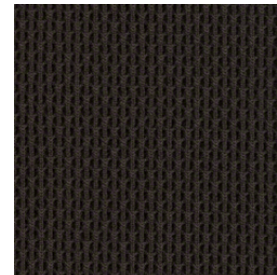
5026 Licorice



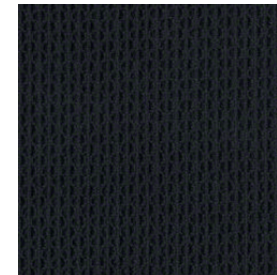
5027 Malt



5028 Root Beer

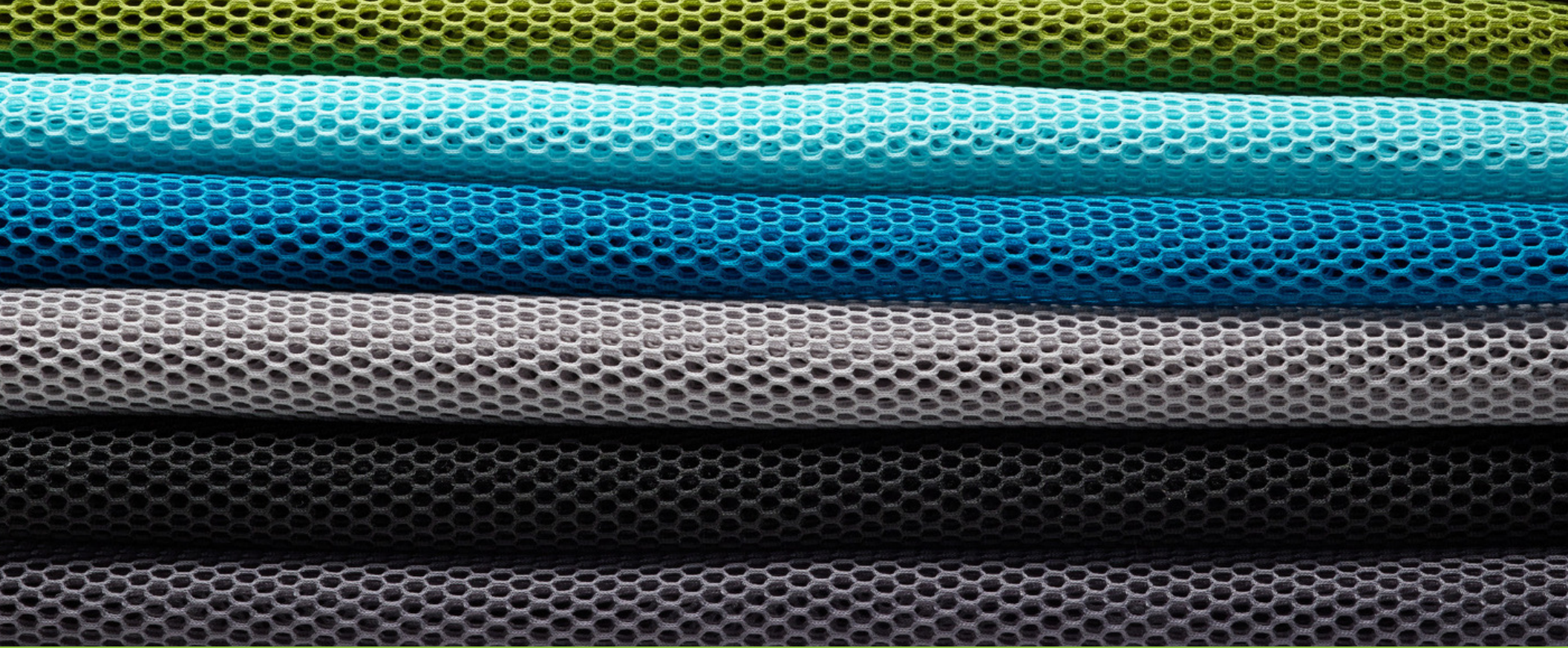


5030 Sailor



To view these fabrics online, click on the desired swatch above.





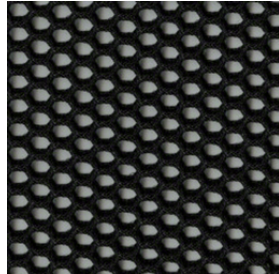
Price Group 2

Only available for Rotary Office
Chair: Think 465A300.

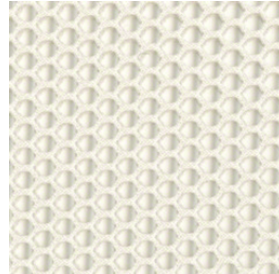
5059 Sailor



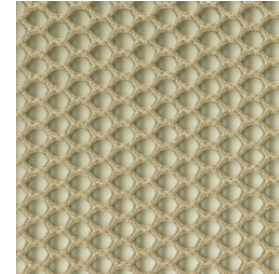
5064 Licorice



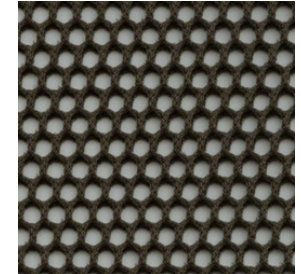
5065 Coconut



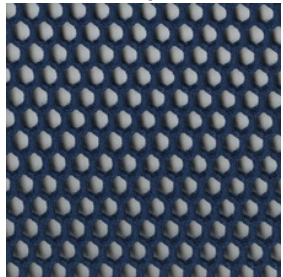
5066 Malt



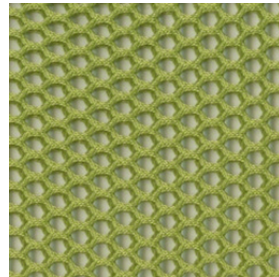
5067 Root Beer



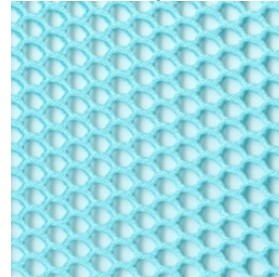
5089 Royal Blue



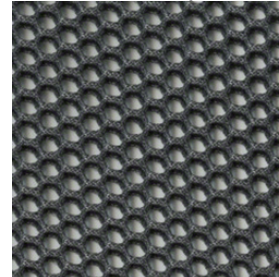
5090 Wasabi



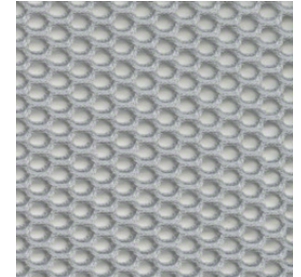
5091 Maya Blue



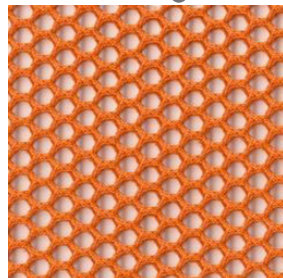
5092 Graphite



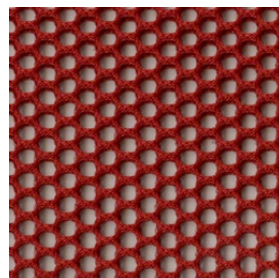
5093 Nickel



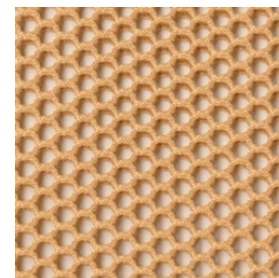
5094 Tangerine



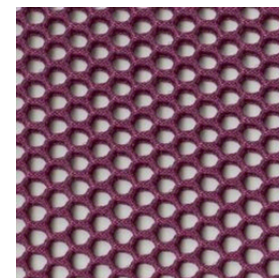
5095 Scarlet



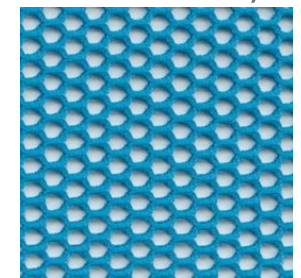
5096 Turmeric



5097 Concord



5098 Blue Jay



To view these fabrics online, click on the desired swatch above.



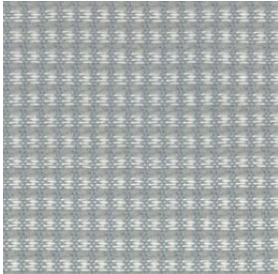
Price Group 2

Only available for Rotary Office
Chair: Reply 466160MTVA.



Reply Mesh/Air

AR01 Grey



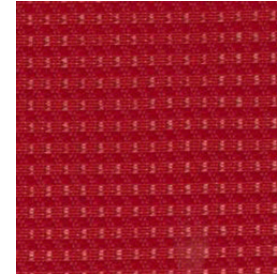
AR02 Black



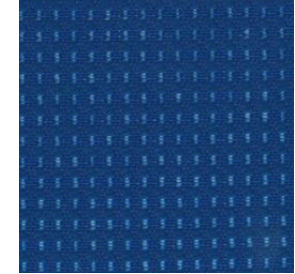
AR03 White



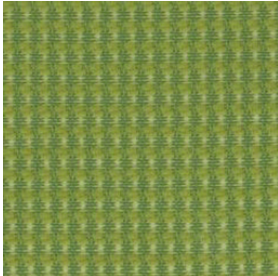
AR04 Red



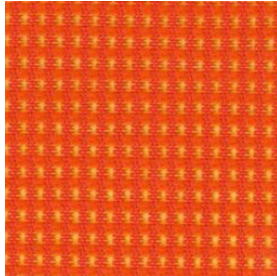
AR05 Royal Blue



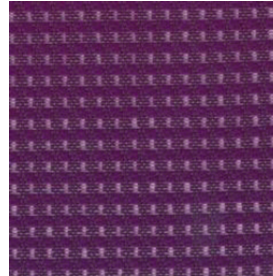
AR06 Apple Green



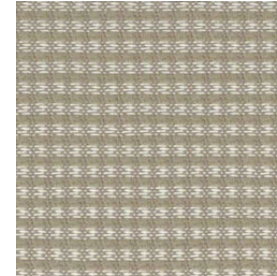
AR07 Orange



AR08 Bright Purple



AR09 Sable



To view these fabrics online, click on the desired swatch above.





Annex F: 1 Page Order Form

CONTRACT AGAINST A SUPPLY ARRANGEMENT

Contract No. : _____

Amend No. : _____ Increase/Decrease _____ Previous Amt _____

Date: _____ Gov't org: _____

This Contract confirms the verbal/written solicitation conducted on (date-YY/MM/DD):

_____ between the **Identified User (IU)** listed below and the **Contractor's representative**.

Financial Code(s): _____

Contractor's Supply Arrangement No. : E60PQ-120001/_____/PQ

The **SUPPLIER** hereby accepts this Contract. (Return signed copy forthwith.) Name and title of person authorized to sign on behalf of supplier.

SUPPLIER NAME: _____

NAME OF PERSON AUTHORIZED TO SIGN: _____

SIGNATURE: _____ **DATE:** _____

To the Contractor: This contract is an abbreviated version of the Request for Bid (RFB), including the resulting Contract, that forms part of your supply arrangement (SA) with PWGSC under the series no. E60PQ-120001/PQ. The terms and conditions of your SA apply to and form part of this Contract.

The Contractor must perform the Work listed in the Requirement & Basis of Payment (Annex A) herein as table 1 below.

Terms and Conditions of Contract (Derived from Section 2 of the RFB)

Invoices

Further to the Invoicing terms of the OS 6B/6C of the Supply Arrangement, the Contractor will deliver the original and one copy of the invoice to the following address for certification and payment. (Checked box applies, if completed.)

Name of the organization, contact and address :

OR

The address shown in the Delivery location.

Security - This contract includes security provisions if one of the boxes below are checked:

The applicable security requirement(s) is(are) set out in the Security Requirement Check List attached as Annex B of this Contract. (IU to attach the applicable SRCL as Annex B to this template). The Contractor must fulfill the security requirements by meeting the terms in the checked box below:

Contractor may be escorted; possession of security clearance not required.

Contractor personnel MAY NOT ENTER NOR PERFORM WORK ON sites where PROTECTED or CLASSIFIED information or assets are kept, without an escort provided by the department or agency for which the work is being performed.

Possession of security clearance(s) is required.

The Contractor must meet the security clearance requirements contained in the clause in Annex B herein.

Defence Contract

This provision applies if the box below is checked.

The Contract is a defence contract within the meaning of the Defence Production Act, R.S.C. 1985, c. D-1: <http://laws-lois.justice.gc.ca/eng/acts/d-1/>

Upholstery (applicable if not already established during telephone quote):

Within two business days of the award of Contract, the Contractor must deliver, to the Contracting Authority, information describing all of the upholstery names and colours available within the colour category specified for each chair.

The Contractor will deliver the chairs corresponding to Canada's choice of specific colour(s) within the colour category. No additional charge will be applied to Canada.

Table 1: Requirement & Basis of Payment (Derived from Section 2, Annex A of the RFB)

#	Item Description	QTY	Firm Unit Price			Extended Total (\$)
			Chair (\$)	Delivery (\$)	Installation (\$)	
1	Model No. (from Supply Arrangement)					
2	Caster Type (Carpet or Hard Surface Floor – Rotary Chairs only)					
3	Upholstering Colour(s) from quote					

Extended Total – all goods and services required (\$): _____

Applicable Tax(es): Specify GST/PST/HST & Amounts (as applicable) (\$): _____

Total Contract Amount (\$): _____

Delivery Location (if applicable):	Date:	Time:	Canada's Facilities to Accommodate the Delivery (if applicable) Dock: [For non-standard size, if applicable] Lift: [Exists or does not exist] [weight capacity, e.g. ½ ton maximum] [Size – W x D] Door: [Size - H x W] Freight Elevator: [Location]
Installation Location (if applicable):	Date:	Time:	

For further information, contact the person:

Identified User (IU) / Contracting Authority (CA):

Project Authority:

Approved for the Minister.

Signature (Mandatory)

Name

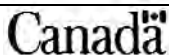
Name

Name

Telephone

Telephone

Date





ONE PAGE Contract (Contract Against a Supply Arrangement)

Contract No. : _____
Date: _____ **Gov't org:** _____

Amend No. : _____
Increase/Decrease _____ **Previous Amt** _____

This Contract confirms the verbal/written solicitation conducted on (date-YY/MM/DD):
_____ between the **Identified User (IU)** listed below and the **Contractor's representative**.

The **SUPPLIER** hereby accepts this Contract. (Return signed copy forthwith.) Name and title of person authorized to sign on behalf of supplier.

NAME: _____
TITLE: _____
SIGNATURE: _____

Financial Code(s): _____

To the Contractor: This contract is an abbreviated version of the Request for Bid (RFB), including the resulting Contract that forms part of your supply arrangement (SA) with PWGSC under the series no. E60PQ-140003/PQ. The terms and conditions of your SA apply to and form part of this Contract.

Contractor's Supply Arrangement No. :
E60PQ-140003/_____/PQ

The Contractor must perform the Work listed in the Requirement & Basis of Payment (Annex A) herein as table 1 below.

Terms and Conditions of Contract (Derived from Section 2 of the RFB)

Invoices

Further to the Invoicing terms of the WTCM of the Supply Arrangement, the Contractor will deliver the original and one copy of the invoice to the following address for certification and payment. (Checked box applies, if completed.)

Name of the organization, contact and address :

OR

The address shown in the Delivery location.

Security - This contract includes security provisions if one of the boxes below are checked:

The applicable security requirement(s) is(are) set out in the Security Requirement Check List attached as Annex B of this Contract. (IU to attach the applicable SRCL as Annex B to this template). The Contractor must fulfill the security requirements by meeting the terms in the checked box below:

- Contractor may be escorted; possession of security clearance not required.
Contractor personnel MAY NOT ENTER NOR PERFORM WORK ON sites where PROTECTED or CLASSIFIED information or assets are kept, without an escort provided by the department or agency for which the work is being performed.
- Possession of security clearance(s) is required.
The Contractor must meet the security clearance requirements contained in the clause in Annex B herein.

Defence Contract

This provision applies if the box below is checked.

The Contract is a defence contract within the meaning of the Defence Production Act, R.S.C. 1985, c. D-1: <http://laws-lois.justice.gc.ca/eng/acts/d-1/>

Standard Finishes (applicable if not already established during telephone quote):

Within two business days of the award of Contract, the Contractor must deliver, to the Contracting Authority, information describing all of the finish names and colours available for each product.

No additional charge will be applied to Canada.

Table 1: Requirement & Basis of Payment (Derived from Section 2, Annex A of the RFB)

#	Item Description	QTY	Firm Unit Price			Extended Total (\$)
			Product (\$)	Delivery (\$)	Installation (\$)	
1	1 GoCUID					
	2 Description of Product					
	3 Supplier Part Number (Supplier to complete if not already completed during telephone quote)					
2	1 GoCUID					
	2 Description of Product					
	3 Supplier Part Number (Supplier to complete if not already completed during telephone quote)					
Extended Total – all goods and services required (\$):						
Applicable Tax(es): Specify GST/PST/HST & Amounts (as applicable) (\$):						
Total Contract Amount (\$):						

Delivery Location (if applicable):	Date:	Time:	Canada's Facilities to Accommodate the Delivery (if applicable) Dock: [For non-standard size, if applicable] Lift: [Exists or does not exist] [weight capacity, e.g. ½ ton maximum] [Size – W x D] Door: [Size - H x W] Freight Elevator: [Location]
Installation Location (if applicable):	Date:	Time:	

For further information, contact the person:		Approved for the Minister.
Identified User (IU) / Contracting Authority (CA):	Project Authority:	Signature (Mandatory)
Name	Name	Name
Telephone	Telephone	Date





Call 1-888-280-9311, email cangov@atlanticbusinessinteriors.ca or visit www.atlanticbusinessinteriors.ca

 facebook.com/atlanticbusinessinteriors

 twitter.com/ABI_tweets

 linkedin.com/company/1720325

©2017 Steelcase Inc. All rights reserved. All specifications subject to change without notice.
Trademarks used herein are the property of Steelcase Inc. or of their respective owners.